

日本島津 鹵素燈紅外線水分天平

MOC63u

水分天平



MOC63U Makes Moisture Content Measurements Quick and Easy

- The measurement procedure is simple. Just close the heater cover to start the measurement.
- The USB connector is standard, so connecting to a PC is easy. (built-in WindowsDirect function)
- Equipped with the UniBloc aluminum block mass sensor.

品牌簡介

日本島津為全世界第二大儀器公司，專為藥廠、醫療生技、航太、高科技、工業等各領域研發各種尖端分析儀器與試驗機。而從1918年島津製造出第一台天平至今已100週年，100年來島津一直朝著為世界提供最精確與高品質的天平不斷前進著。

在台灣，包括工研院量測中心、經濟部標準檢驗局、台灣電子檢驗中心、SGS台灣檢驗科技(股)公司、UL 優力國際安全認證 Bureau Veritas 國際商品試驗等全世界各權威商品檢驗公司皆有使用日本島津天平，其品質深受各界信任與肯定。

堅定不移地以客戶為中心的承諾與對卓越技術的執著為日本島津天平所堅持的信念，既是歷史的標誌，亦是走向未來的原則。

天平特色

- ※ 螢幕上以圖示引導您操作步驟，蓋上蓋子即可立刻自動加熱量測，無須再按按鍵，操作簡易方便。
- ※ 大型LCD螢幕即時可顯示溫度、時間、含水率等資訊。
- ※ 鹵素燈紅外線加熱器，加熱快速且均勻，並同時有使用壽命較長之優點。
- ※ 高秤量高精密度，秤重達60公克；含水率精度達0.01%。含水變化率0.01%~0.1%可無段調整。
- ※ 八種加熱模式滿足各種材料需求，並可將加熱模式加以記憶，每次使用時無須重新設定。



【自動測定模式】



【快速自動模式/快速時間模式】



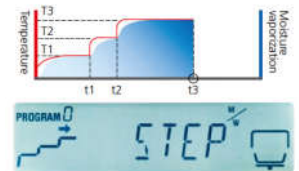
【螢幕圖示指引操作，簡單易懂】



【時間測定模式】



【慢速自動模式/慢速時間模式】



【階段自動模式/階段時間模式】

- ※ 可記憶100組量測結果。
- ※ 可由內建RS232及USB介面輸出資料至電腦或印表機
- ※ 電腦無須再安裝特殊軟體，可將量測資料上傳EXCELL
並產生曲線圖表或做編輯紀錄。
- ※ 業界最大秤盤尺寸：95mm。
- ※ 附贈50片拋棄式鋁箔盤。



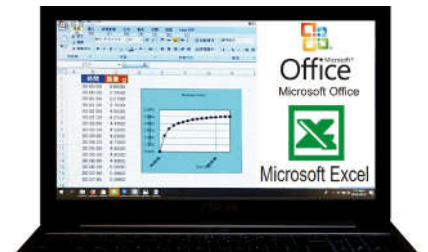
外接印表機

```

SHIMADZU CORP.
TYPE MOC63U
SN D000000000
ID 0000
CODE 0006
DATE 18-10-19
TIME 17:14
PND. 6
UNIT M/U
MODE TIME
TEMP 120C
STOP 00:02

Wet. M(g) 1.638
TIME M-A(K%)
00:00:00 0.00
00:01:30 0.10
00:01:00 0.14
00:01:30 0.16
00:02:00 0.18
00:02:00 0.18
Dry. M(g) 1.635
    
```

印表機列印範例



WindowsDirect 電腦直傳



Customers in the Food Product Industry

- Research and development of food products, drinks, and food additives
- Inspections of food products manufacturing processes and products
- Measurements of raw materials (such as rice, malt, tea leaves, and corn starch)



Customers in the Pharmaceuticals and Cosmetics Industries

- Pharmaceuticals research and development (pills, granules, capsules, and ointments)
- Cosmetics research and development (such as hair products, face lotions, and soap)
- Inspections of pharmaceutical and cosmetic manufacturing processes and products



Customers in Water Supply and Environmental Fields

- Moisture ratio measurements and inspections of sludge
- Moisture ratio measurements and inspections of soil
- Moisture ratio measurements and inspections of waste matter



Customers in the Chemical Industry

- Research and development of samples, and inspection of products (solids, powders, pellets, films, and liquid samples)
- Moisture ratio measurements for plastics, rubbers, paints, pesticides, and functional materials



Customers in Metals and Raw Materials Industries

- Moisture ratio measurements of raw materials (such as iron ore)
- Moisture ratio measurements of metals (such as metal powders)
- Moisture ratio measurements of lumber, paper, fiber, and lime



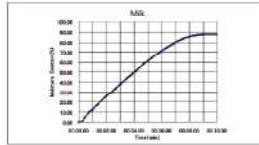
Customers in the Automotive and Electrical Machinery Industries

- Moisture ratio measurements of plastic pellets and plastic parts
- Moisture ratio measurements of toner
- Moisture ratio measurements of foundry sand



【牛奶】含水率(或固形物)量測

The drying curve for milk in timed ending mode is shown below.



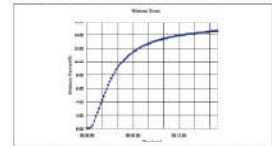
Photos of the milk before and after drying are shown below.



(Before measurement) 1 g of milk was dripped on to a fibreglass sheet for liquid measurements. (After measurement) The moisture has evaporated from the milk, and the remaining fat has yellowed slightly.

【米粒 玉米粒】含水率量測

The drying curve for white rice in automatic ending mode is shown below.



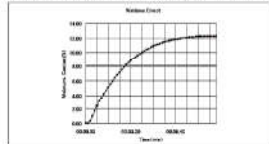
Photos of the white rice before and after drying are shown below.



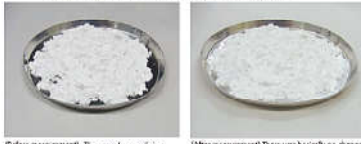
(Before measurement) The white rice was spread evenly over the pan. (After measurement) The entire sample turned yellow.

【藥粉】含水率量測

The drying curve for corn starch in automatic ending mode is shown below.



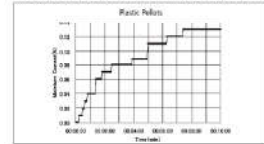
Powder medicine: before and after drying are shown below.



(Before measurement) The powder medicine was spread evenly over the pan. (After measurement) There was basically no change in appearance.

【塑膠粒】含水率量測

The drying curve for plastic pellets in timed ending mode is shown below.



Photos of the plastic pellets before and after drying are shown below.



(Before measurement) The sample was spread evenly over the pan. (After measurement) There was basically no change in appearance.

規 格

1. 型 號	MOC63u
2. 最大秤重	60g
3. 精 密 度	0.001g
4. 含水率精密度	0.01%
5. 再 現 性	0.02% (@10g)
6. 溫度設定範圍	50~200°C(可1°C調整)
7. 單 位 顯 示	① 公克 ② 含水量/濕基 ③ 固形物/濕基 ④ 含水量/乾基 ⑤ 濕基/乾基, %
8. 螢 幕	LED省電背光液晶螢幕
9. 八種量測模式	① 自動測定 ② 時間測定 ③ 快速自動 ④ 快速時間 ⑤ 慢速自動 ⑥ 慢速時間 ⑦ 階梯式自動 ⑧ 階梯式時間
10. 加熱時間	1~240分鐘 · 最長可12小時連續加熱
11. 自訂模式	可自訂10組量測模式
12. 資料記憶	可記憶100組資料
13. 加熱原理	鹵素燈紅外線加熱
14. 輸出埠	RS232C、USB 可外接電腦以及印表機
15. 秤 盤	95mm圓盤(3PCS)
16. 尺 寸	202(寬)X336(深)X157(高)mm
17. 電 壓	110V 或 220V

【各種材料含水率量測範例】

Sample	Sample Quantity	Measurement Mode		Set Temperature (°C)	Measurement Time (min)	Moisture Ratio (%)
		Ending Conditions	Finishing Conditions (% or min)			
Dog food	1g	AUTO	0.05%	160	5:48	6.45
Table salt	5g	TIME	10 minutes	200	10:00	0.08
Instant coffee	1g	TIME	10 minutes	120	10:00	7.43
Coffee beans (raw)	5g	AUTO	0.05%	140	17:30	9.32
Coffee beans (roasted)	3g	AUTO	0.05%	140	7:06	2.68
Green tea	5g	AUTO	0.05%	120	9:05	3.76
Corn starch	5g	AUTO	0.02%	180	9:25	12.17
Sugar (granulated sugar)	5g	AUTO	0.05%	160	1:02	0.13
White rice	6g	AUTO	0.05%	200	13:55	14.48
Mayonnaise	1g	TIME	10 minutes	160	10:00	20.51
Orange juice	1g	AUTO	0.05%	140	10:09	88.89
Milk	1g	AUTO	0.05%	140	7:30	87.36
Chocolate	3g	AUTO	0.01%	140	6:18	2.36
Rolled oats	6g	AUTO	0.05%	200	10:05	12.65
Tomato ketchup	2.5g	AUTO	0.1%	140	19:47	69.40
Frozen sweets	2.5g	TIME	12 minutes	140	12:00	84.53
Dried mangoes	5g	AUTO	0.05%	120	28:27	6.62
Palm oil	2.5g	TIME	5 minutes	120	5:00	0.41
Hand soap	1g	AUTO	0.05%	200	21:36	88.89
Lipstick	1g	TIME	3 minutes	100	3:00	0.73
Plastic (PMMA pellet)	10g	TIME	25 minutes	100	25:00	0.13
Photocopier paper	1g	AUTO	0.05%	200	1:50	7.84
Sodium tartrate dihydrate	5g	TIME	15 minutes	160	15:00	15.80
Detergent (powdered)	5g	AUTO	0.05%	160	13:08	9.79
Solid soap	3g	TIME	16 minutes	200	16:00	9.09
Water-based paint	1g	AUTO	0.05%	200	9:27	52.39
Sludge cake	2g	AUTO	0.05%	200	21:31	81.55
Potting soil	5g	AUTO	0.05%	120	15:30	33.40
Sawdust	4g	AUTO	0.05%	160	8:27	34.38

